

**Tuba**

Concert Band-- Bb Chromatic Scale, Bb Major Scale, Etudes: Auld Lang Syne, Surprise Symphony.  
Symphonic Band-- Bb Chromatic Scale, F Chromatic Scale, Bb Major Scale, F Major Scale, Etudes #1, 2.

**Euphonium B.C & T.C.**

Concert Band-- Concert Bb Chromatic Scale, Concert Bb Major Scale, Auld Lang Syne, Surprise Symphony.  
Symphonic Band—Concert Bb Chromatic Scale, Concert F Chromatic Scale, Concert Bb Major Scale, Concert F Major Scale, Over The River And Through The Woods, Stars & Stripes Forever.

**CHROMATIC SCALES**

185.



**BARITONE KEY OF C (CONCERT B<sub>b</sub>)**

1.



**17. ESSENTIAL ELEMENTS QUIZ - AULD LANG SYNE**

Scottish Folk Song



**150. THEME FROM "SURPRISE SYMPHONY"**

Franz Josef Haydn



**Tuba**

Concert Band-- Bb Chromatic Scale, Bb Major Scale, Etudes: Auld Lang Syne, Surprise Symphony.  
Symphonic Band-- Bb Chromatic Scale, F Chromatic Scale, Bb Major Scale, F Major Scale, Etudes #1, 2.

**Euphonium B.C & T.C.**

Concert Band-- Concert Bb Chromatic Scale, Concert Bb Major Scale, Auld Lang Syne, Surprise Symphony.

Symphonic Band—Concert Bb Chromatic Scale, Concert F Chromatic Scale, Concert Bb Major Scale, Concert F Major Scale, Over The River And Through The Woods. Stars & Stripes Forever.

186.



**BARITONE T.C. KEY OF G (CONCERT F)**

167.



**122. OVER THE RIVER AND THROUGH THE WOODS**

American Folk Song



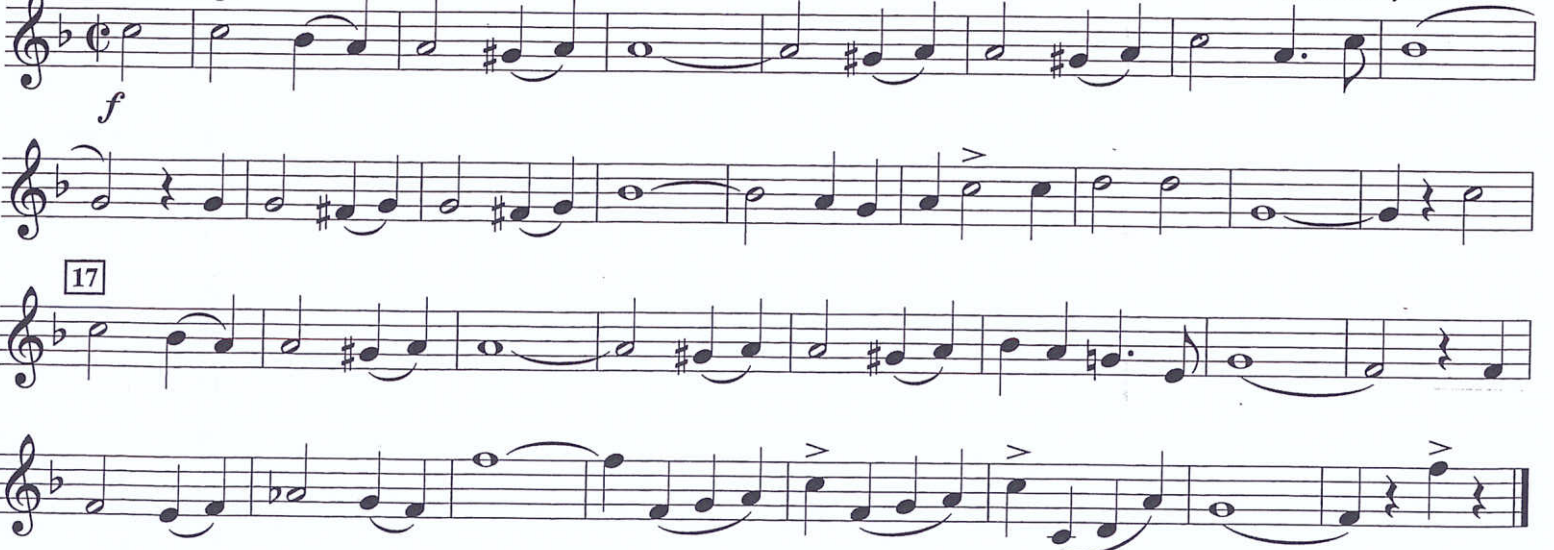
**99. THE STARS AND STRIPES FOREVER**

[♩. ♪ = 2/4 ♩. ♪]

John Philip Sousa

March Tempo

Check rhythm



LTMC 2017 Auditions

**Tuba**

Concert Band-- Bb Chromatic Scale, Bb Major Scale, Etudes: Auld Lang Syne, Surprise Symphony.

Symphonic Band-- Bb Chromatic Scale, F Chromatic Scale, Bb Major Scale, F Major Scale, Etudes #1, 2.

**Euphonium B.C & T.C.**

Concert Band-- Concert Bb Chromatic Scale, Concert Bb Major Scale, Auld Lang Syne, Surprise Symphony.

Symphonic Band—Concert Bb Chromatic Scale, Concert F Chromatic Scale, Concert Bb Major Scale, Concert F Major Scale, Over The River And Through The Woods, Stars & Stripes Forever.

**CHROMATIC SCALES**

185.



**KEY OF B $\flat$**  In this key signature, play all B $\flat$ 's and E $\flat$ 's.

1.



**17. ESSENTIAL ELEMENTS QUIZ – AULD LANG SYNE**

Scottish Folk Song

Andante



**150. THEME FROM "SURPRISE SYMPHONY"**

Franz Josef Haydn

Andante



LTMC 2017 Auditions

**Tuba**

Concert Band-- Bb Chromatic Scale, Bb Major Scale, Etudes: Auld Lang Syne, Surprise Symphony.  
Symphonic Band-- Bb Chromatic Scale, F Chromatic Scale, Bb Major Scale, F Major Scale, Etudes #1, 2.

**Euphonium B.C & T.C.**

Concert Band-- Concert Bb Chromatic Scale, Concert Bb Major Scale, Auld Lang Syne, Surprise Symphony.  
Symphonic Band—Concert Bb Chromatic Scale, Concert F Chromatic Scale, Concert Bb Major Scale, Concert F Major Scale, Over The River And Through The Woods, Stars & Stripes Forever.

186.

**KEY OF F**

167.

**122. OVER THE RIVER AND THROUGH THE WOODS**

American Folk Song

Allegretto

**99. THE STARS AND STRIPES FOREVER**

[♩ = 2/4 ♩]

John Philip Sousa

March Tempo

Check rhythm

LTMC 2017 Auditions

Tuba

Concert Band-- Bb Chromatic Scale, Bb Major Scale, Etudes: Auld Lang Syne, Surprise Symphony.  
Symphonic Band-- Bb Chromatic Scale, F Chromatic Scale, Bb Major Scale, F Major Scale, Etudes #1, 2.

Euphonium B.C & T.C.

Concert Band-- Concert Bb Chromatic Scale, Concert Bb Major Scale, Auld Lang Syne, Surprise Symphony.  
Symphonic Band—Concert Bb Chromatic Scale, Concert F Chromatic Scale, Concert Bb Major Scale, Concert F Major Scale, Over The River And Through The Woods, Stars & Stripes Forever.

**CHROMATIC SCALES**

185.

Musical notation for chromatic scale 185 in Bb major, 4/4 time. The scale starts on Bb and goes up to G, then down to Bb.

**KEY OF Bb** In this key signature, play all Bb's and Eb's.

Musical notation for chromatic scale 185 in Bb major, 4/4 time. The scale starts on Bb and goes up to G, then down to Bb.

**117. ESSENTIAL ELEMENTS QUIZ - AULD LANG SYNE**

Scottish Folk Song

Musical notation for Auld Lang Syne in Bb major, 4/4 time. The tempo is Andante. The piece starts with a dynamic of *mf* and includes a crescendo to *f*. A triangle symbol with the text "Check Rhythm" is placed under the music.

**150. THEME FROM "SURPRISE SYMPHONY"**

Franz Josef Haydn

Musical notation for the theme from Surprise Symphony in Bb major, 3/4 time. The tempo is Andante. The piece starts with a dynamic of *p* and includes a crescendo to *f*. A triangle symbol with the text "*mf*" is placed under the music.

Andantino

Luba Symphonic Dance

1

*p* *legato*

*mf*

*ff*

*ff*

This system contains four staves of music in bass clef with a key signature of two flats and a common time signature. The first staff begins with a dynamic marking of *p* and the instruction *legato*. The second staff has a dynamic marking of *mf*. The third and fourth staves both have a dynamic marking of *ff*. The music consists of eighth and sixteenth notes with various phrasing slurs and accents.

Allegro agitato

2

*mf*

*p*

*mf*

*p*

*mf*

*p*

*p*

This system contains four staves of music in bass clef with a key signature of two flats and a common time signature. The first staff begins with a dynamic marking of *mf*. The second and third staves have dynamic markings of *p* and *mf* respectively. The fourth staff has dynamic markings of *p* and *mf*. The music is more rhythmic and includes accents and slurs.

186.

Exercise 186 is a single staff of music in bass clef with a key signature of two flats and a 4/4 time signature. It consists of a sequence of eighth and quarter notes.

KEY OF F

167.

Exercise 167 is a single staff of music in bass clef with a key signature of two flats and a 4/4 time signature. It consists of a sequence of eighth and quarter notes.